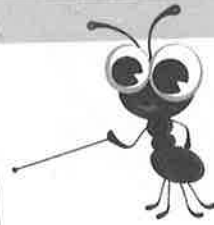


Name: \_\_\_\_\_ Date: \_\_\_\_\_

# Volume and capacity

Estimate and measure volume and capacity



You will need:

- coloured pencils
- pencils
- litre jug



full



empty



half full

Less than a litre	Same as a litre	More than a litre

## What to do

- For the first task, ask your child to use a pencil to show the amount of liquid that would be in the bucket for each label to be correct.
- Then ask your child to look around your home and find and then draw three containers in the table that they think hold less than a litre, three that they think hold the same as a litre and three that they think hold more than a litre. Examples could include a cup, a vase or a juice carton.



For each container that your child has drawn, check the accuracy of their estimate by filling each one with water using a litre jug. Tick estimates that are correct and draw an arrow next to any estimate that is wrong to show where in the table it should be.