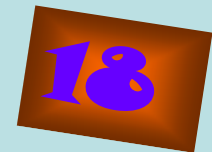
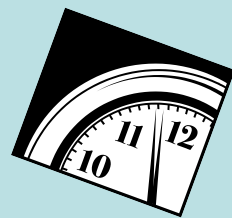




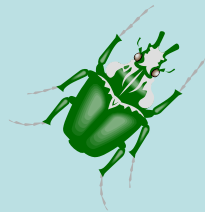
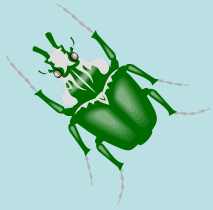
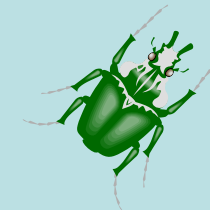
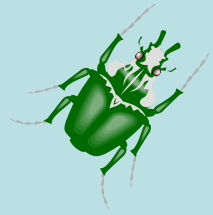
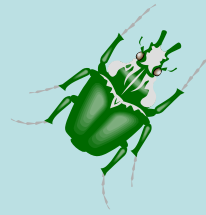
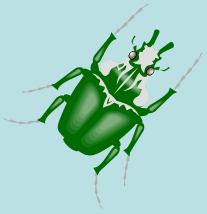
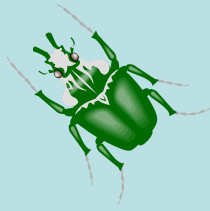
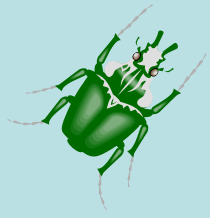
# Number bonds



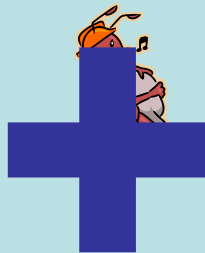
## to 20



Learning Objective:  
To know addition and  
subtraction facts to 20



**0 + 20**





2

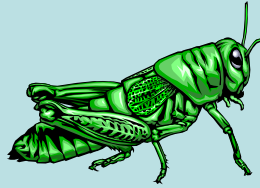
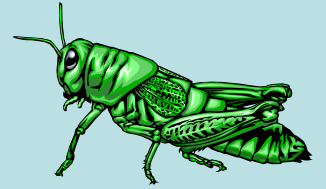
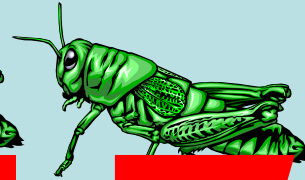
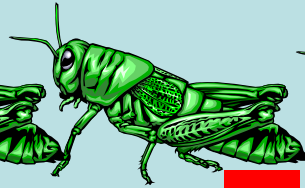
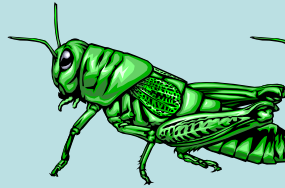
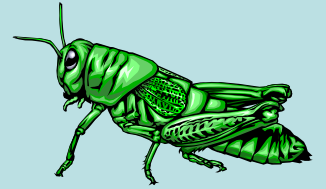
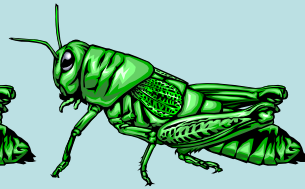
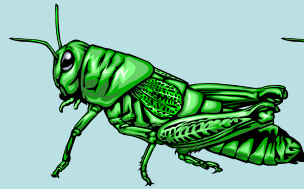
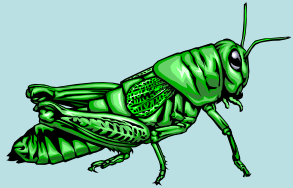


+



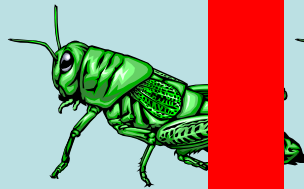
8





3

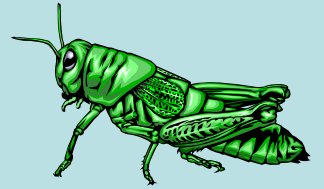
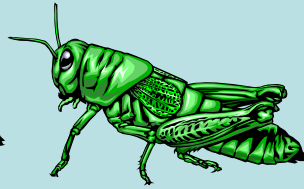
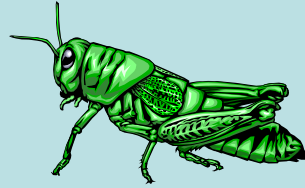
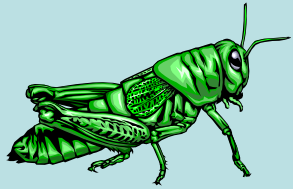
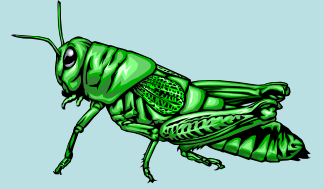
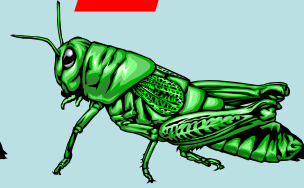
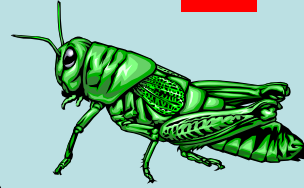
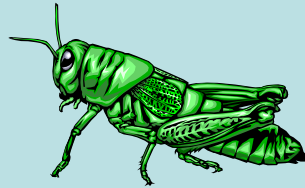
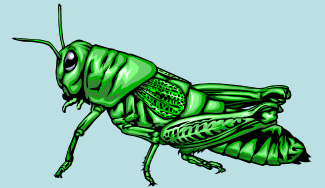
+



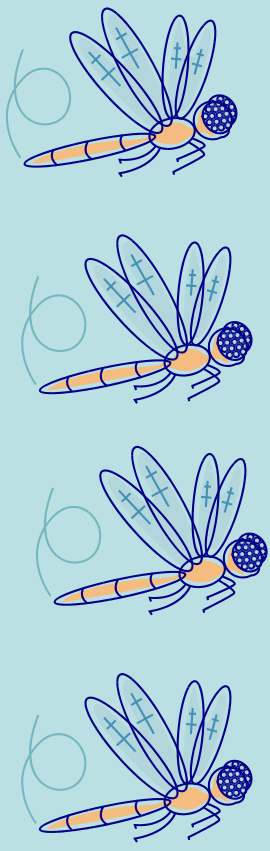
4

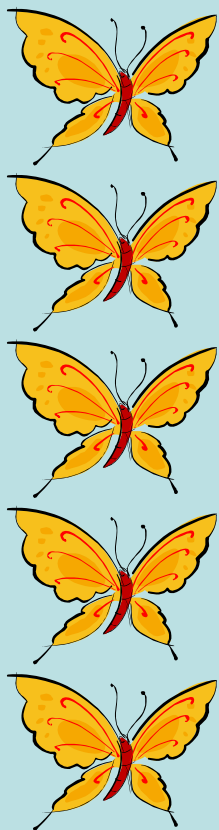


7



$$4 + 16$$





5

+



15



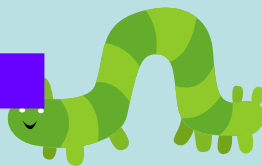




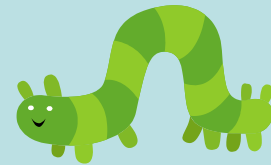
7



+



3



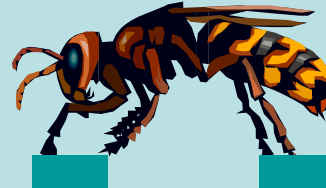


8

+

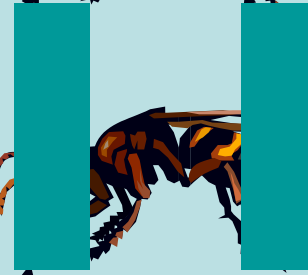
12



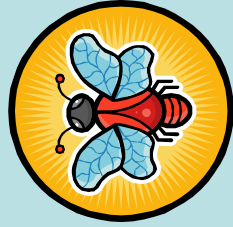
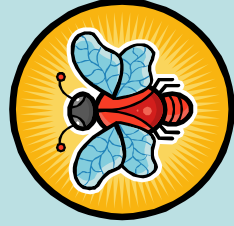
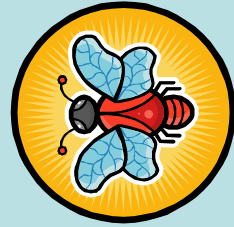
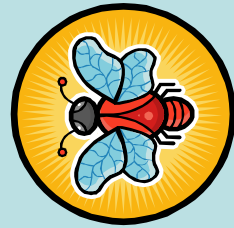
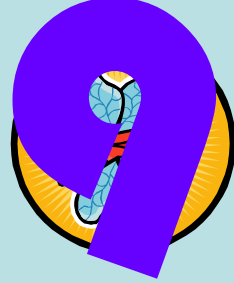
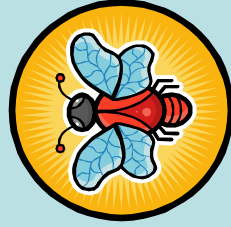
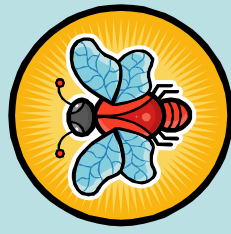
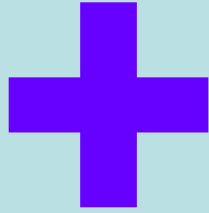
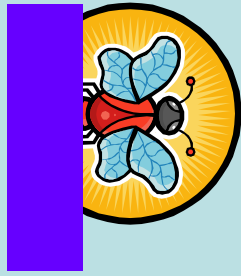
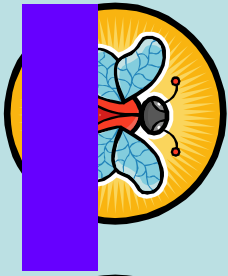
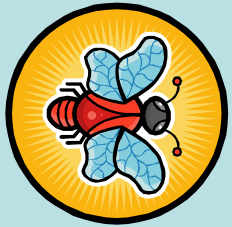
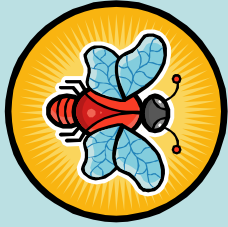
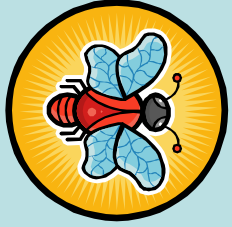
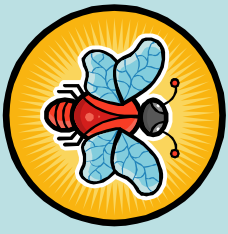
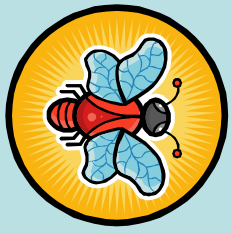


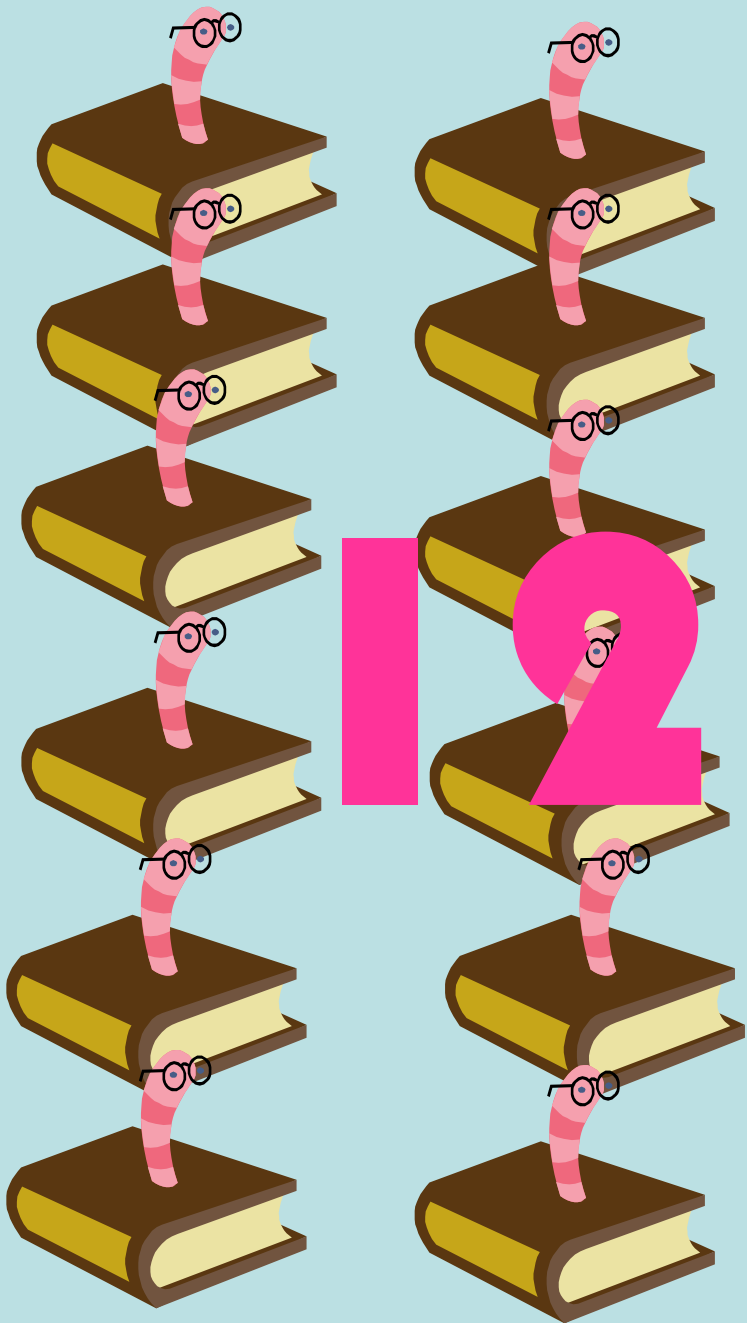
9

+









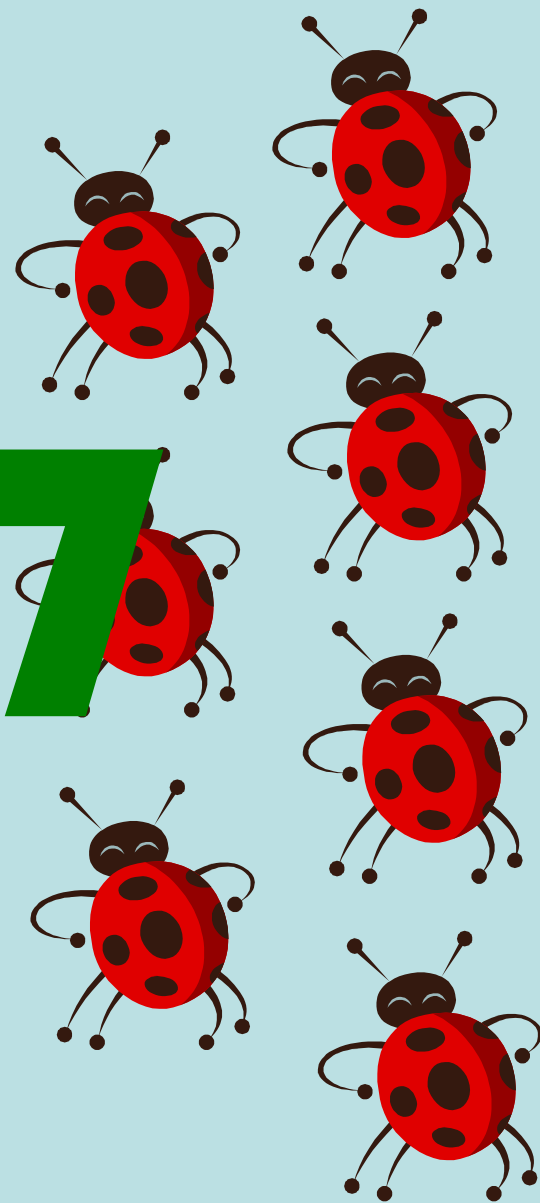
+





+

7

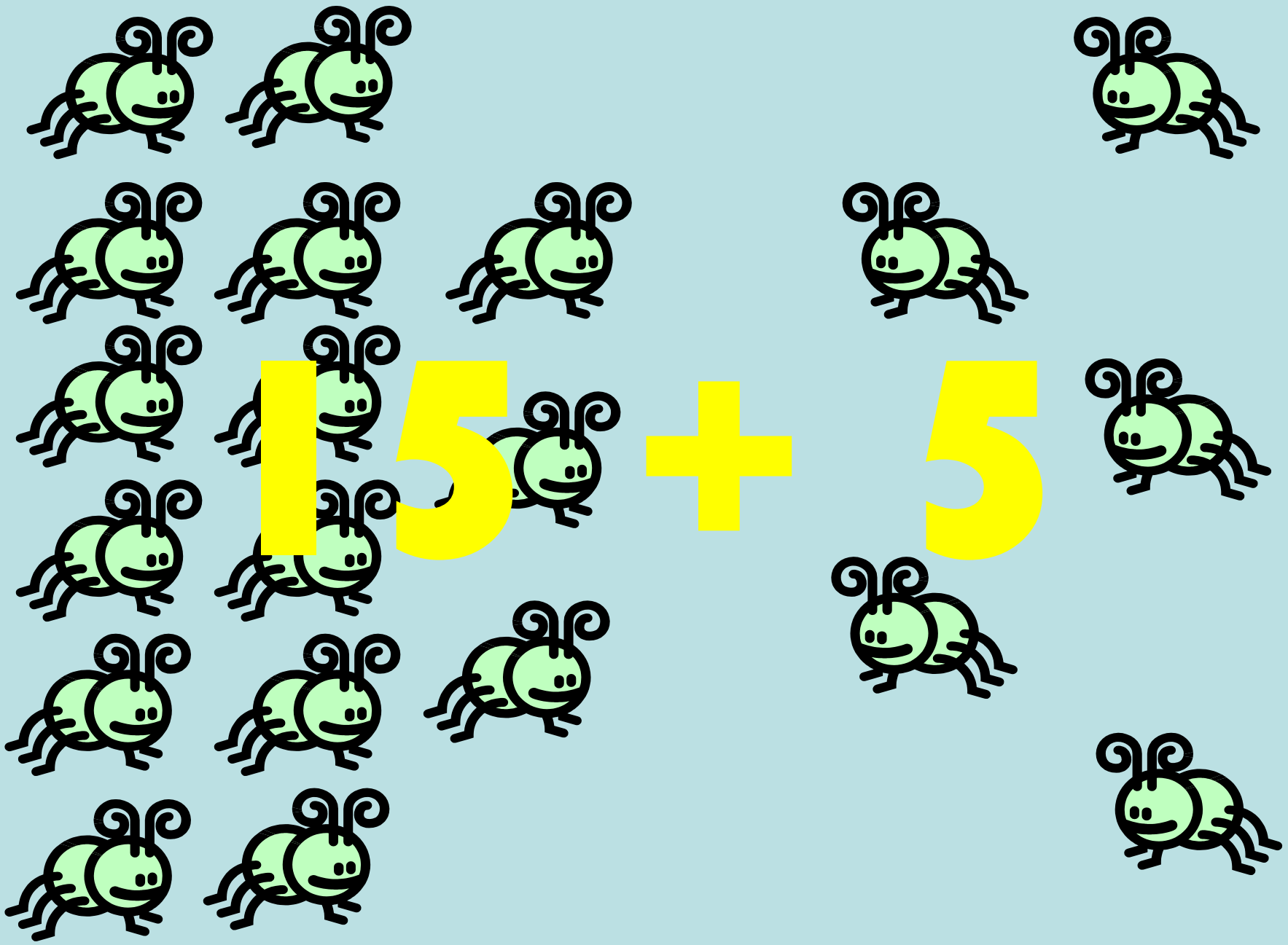




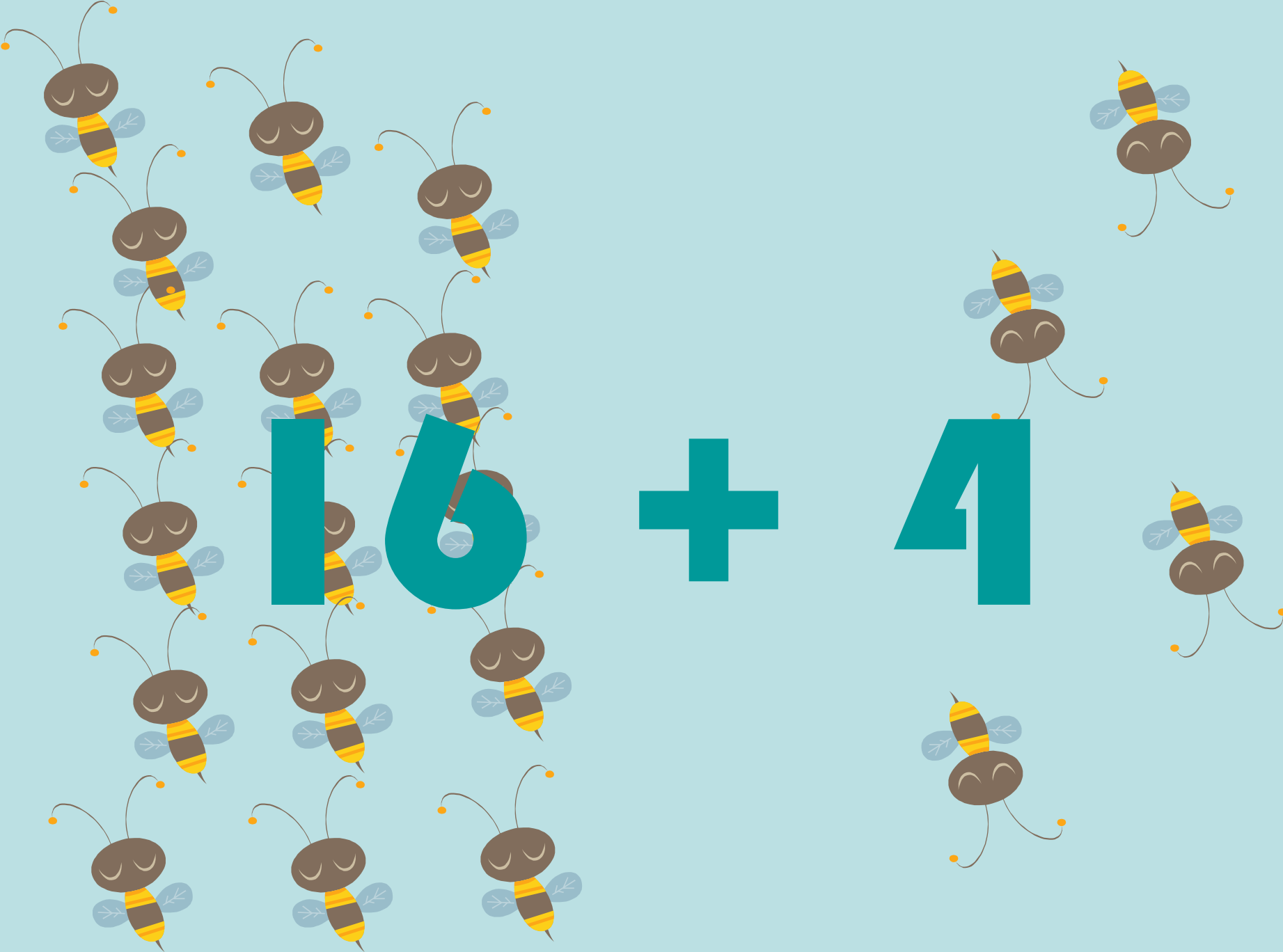


**14 + 6**

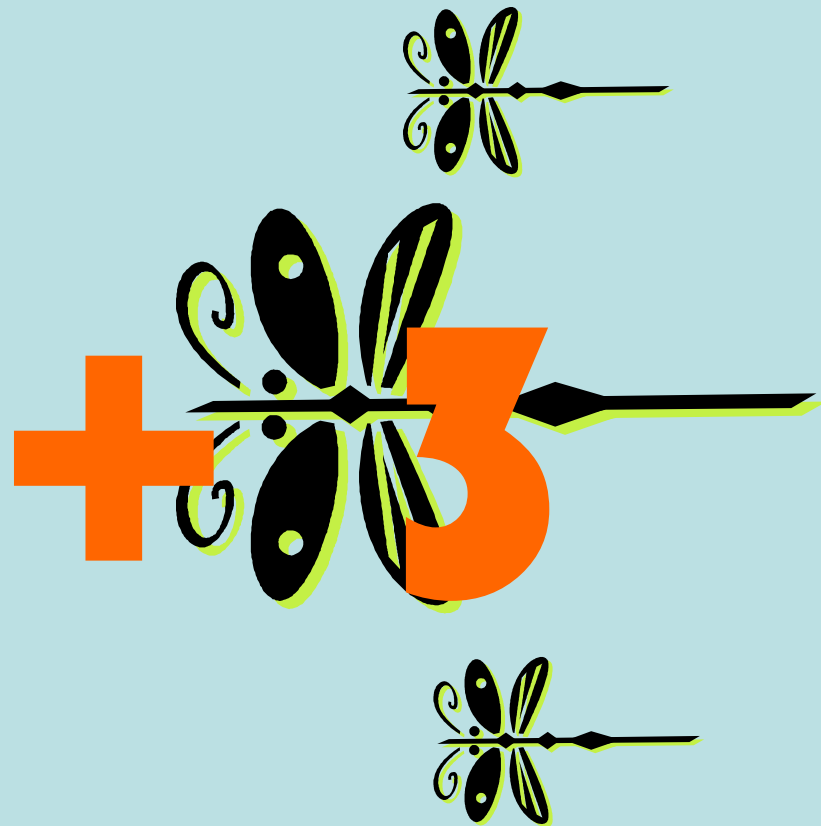
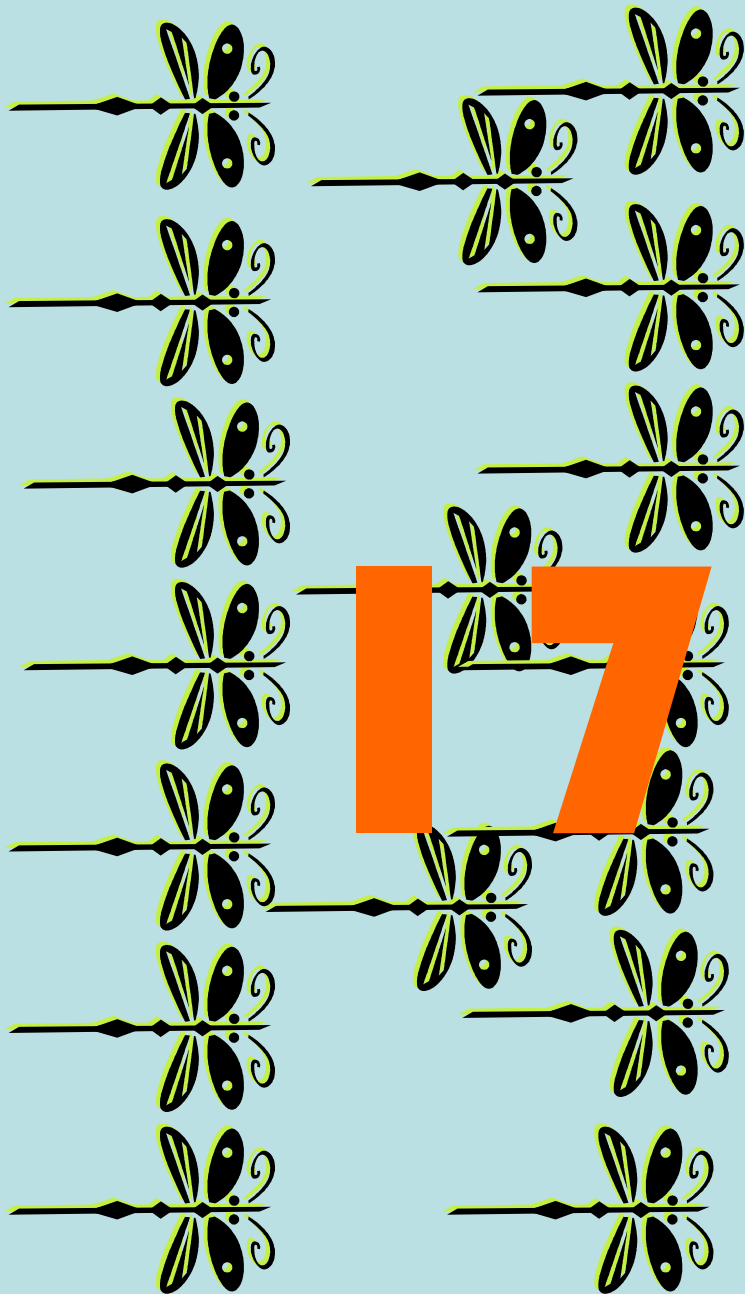


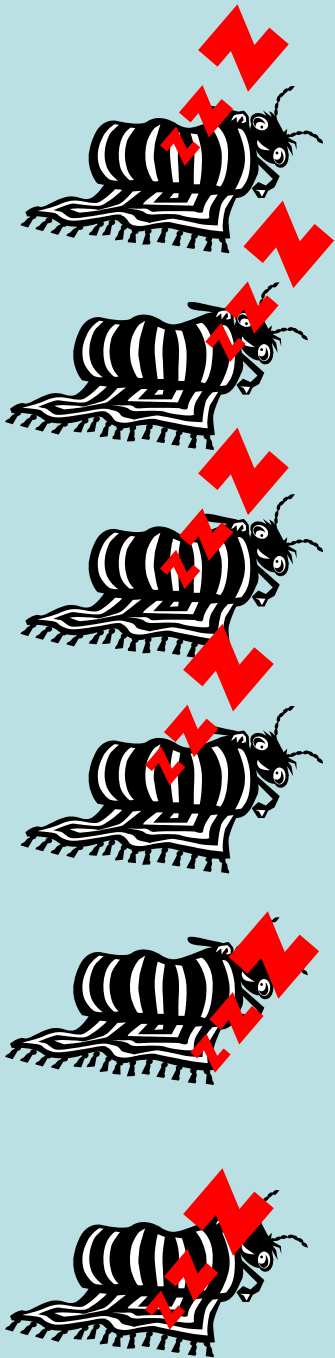


$$15 + 5$$

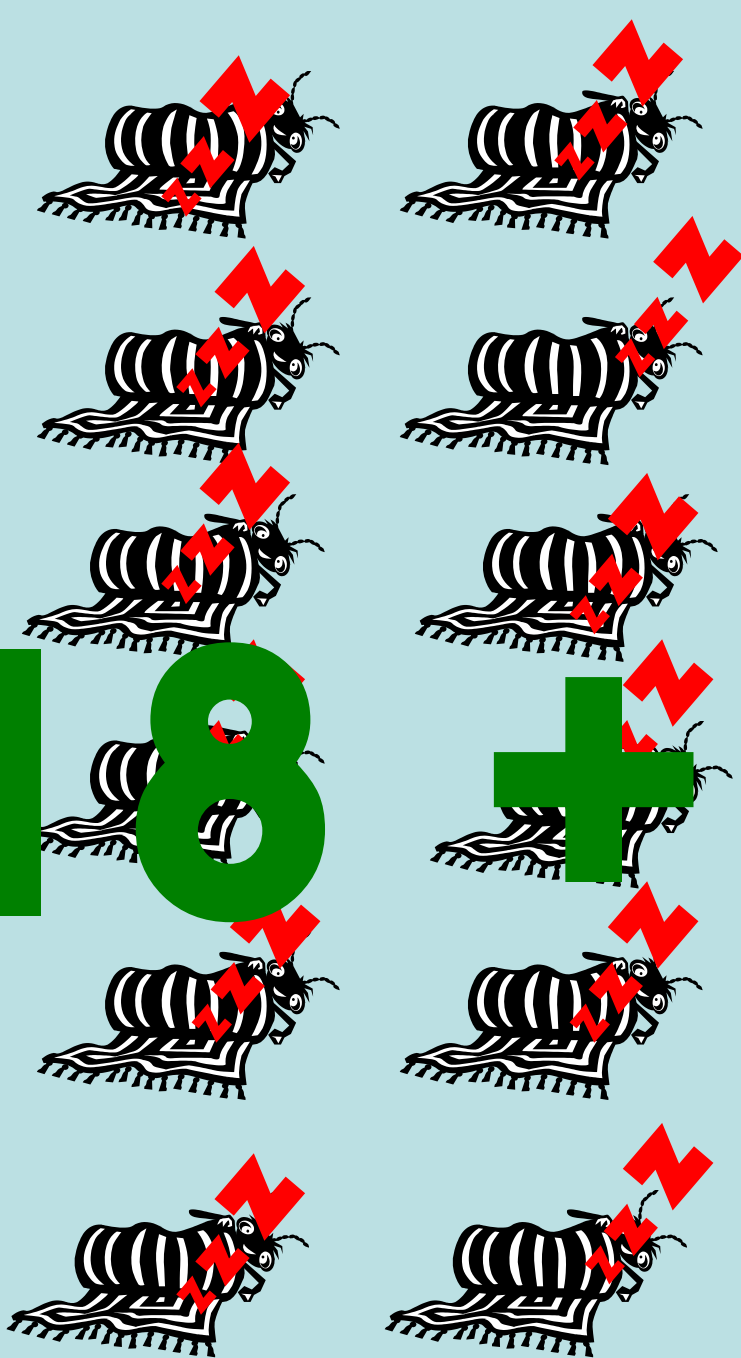


$$16 + 4$$





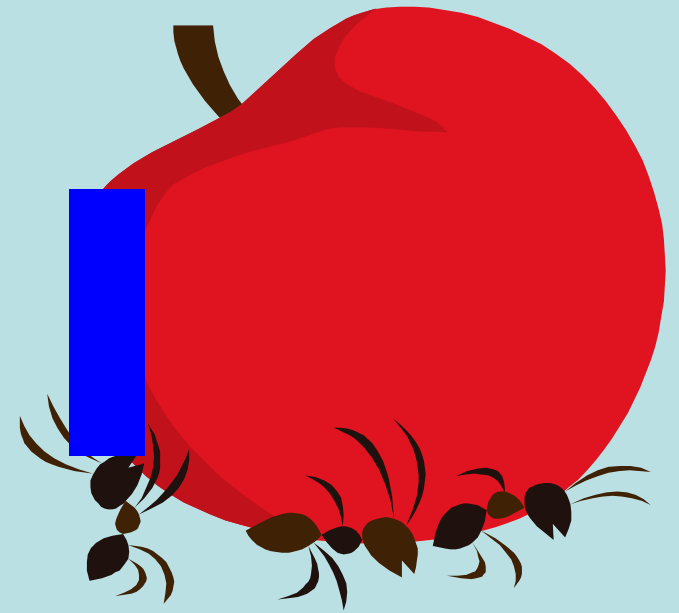
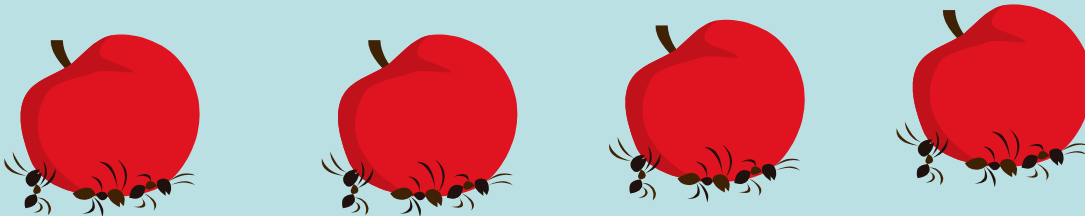
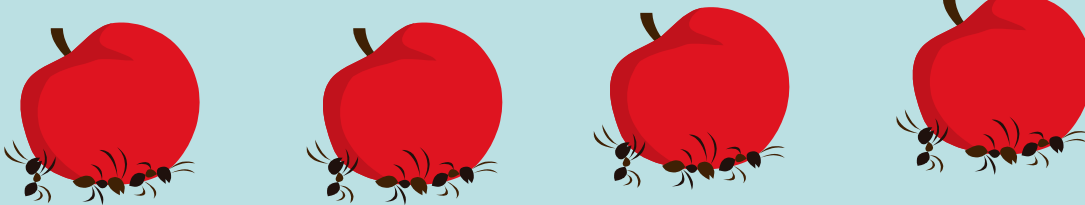
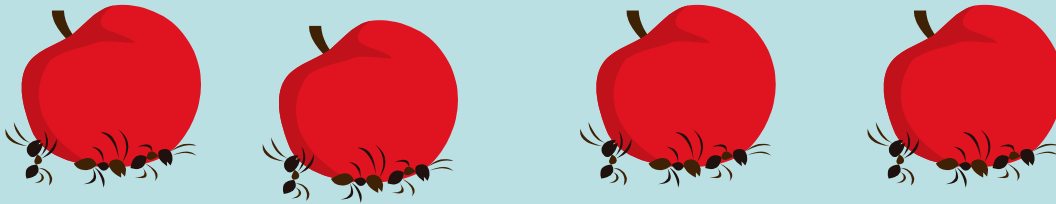
18



+

2





# Checking with the inverse:

The inverse is the opposite operation so addition and subtraction are the inverse of each other.

The inverse is very useful for checking calculations.

# Examples

$$11 + 5 = 16 \text{ so } 16 - 5 = 11$$

$$10 + 8 = 18 \text{ so } 18 - 8 = 10$$

Or the other way round:

$$13 - 6 = 7 \text{ so } 7 + 6 = 13$$

$$14 - 9 = 5 \text{ so } 5 + 9 = 14$$

Maths is full of patterns!



Task: Use your knowledge of number bonds throughout the week to add and subtract up to and including 20.

Remember: Use your number line carefully to count on (when adding +) and count back (when subtracting -). Always check with the inverse!