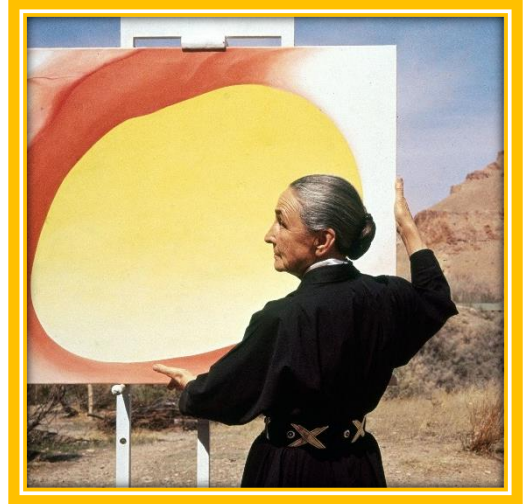


Georgia O'Keeffe

1887-1986

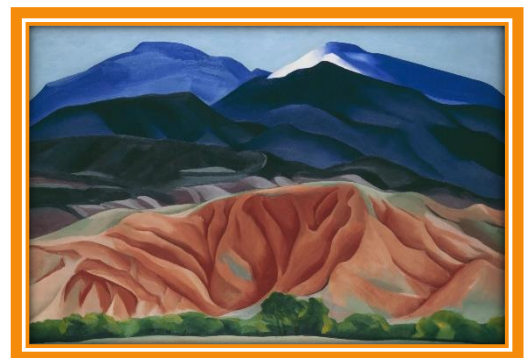


Georgia O'Keeffe was an American female artist who was born on 15th November 1887. She grew up on a farm with her six siblings. She studied at the Art Institute of Chicago for a year and then attended the Art Students League in New York for another year after that. Here, she learned about the techniques of **realist painting**. However, whilst studying the work of another artist, **Arthur Wesley-Dow**, O'Keeffe began experimenting with different styles and techniques. As a result, in 1915, she began a series of more **abstract** pieces of artwork.



She is most well known for her paintings of flowers. She liked to paint them close up to show their beauty. She would study the colours, shapes, patterns and designs of each flower, thinking about what made it unique and different from other flowers. Her paintings would always fill the space on the canvas. During her career, she painted more than 200 pictures of flowers.

O'Keeffe is also famous for paintings of nature, including rocks, shells, animal bones and spectacular landscapes of places that she had visited, including Mount Fuji and New Mexico (see right). Sadly, O'Keeffe's eyesight began to fail in her later years. Nevertheless, she was determined to continue creating art and did so with the help of some assistants. She died on 6th March 1986, aged 98.



Glossary

Realist painting: a painting created to look as much like the real thing as possible.

Abstract: modern art which uses colours, lines and shapes but is not meant to represent objects or living things from our everyday world.

Arthur Wesley-Dow: an American painter, printmaker, photographer and art teacher.