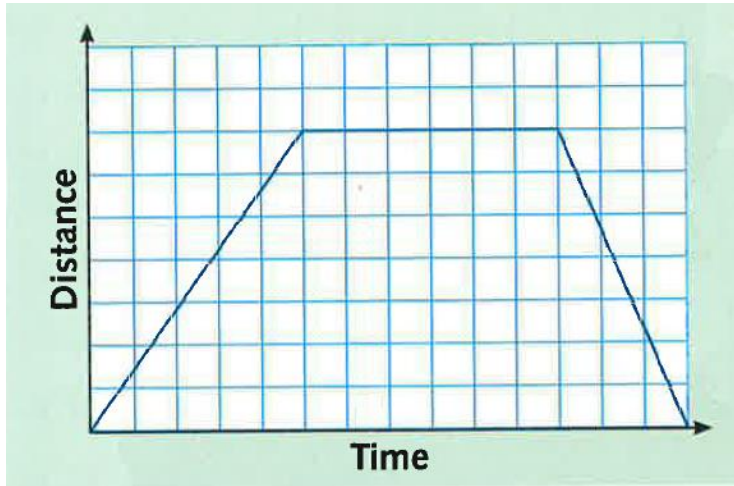


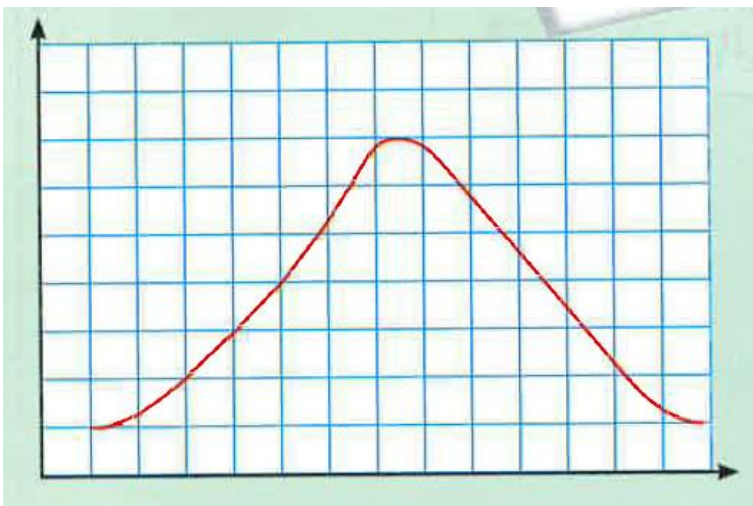
Time Graph Storytelling

Challenge 1



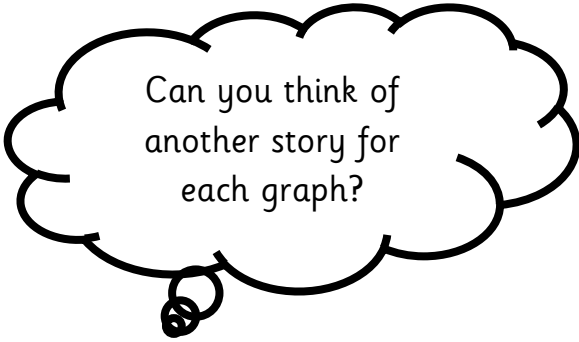
What could a story for this graph be?

What conclusions can you draw from the data in this graph?



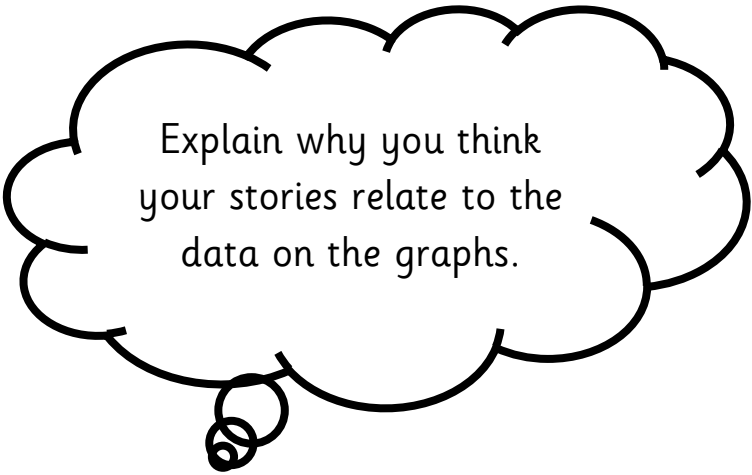
What could a story for this graph be?

What conclusions can you draw from the data in the graphs?



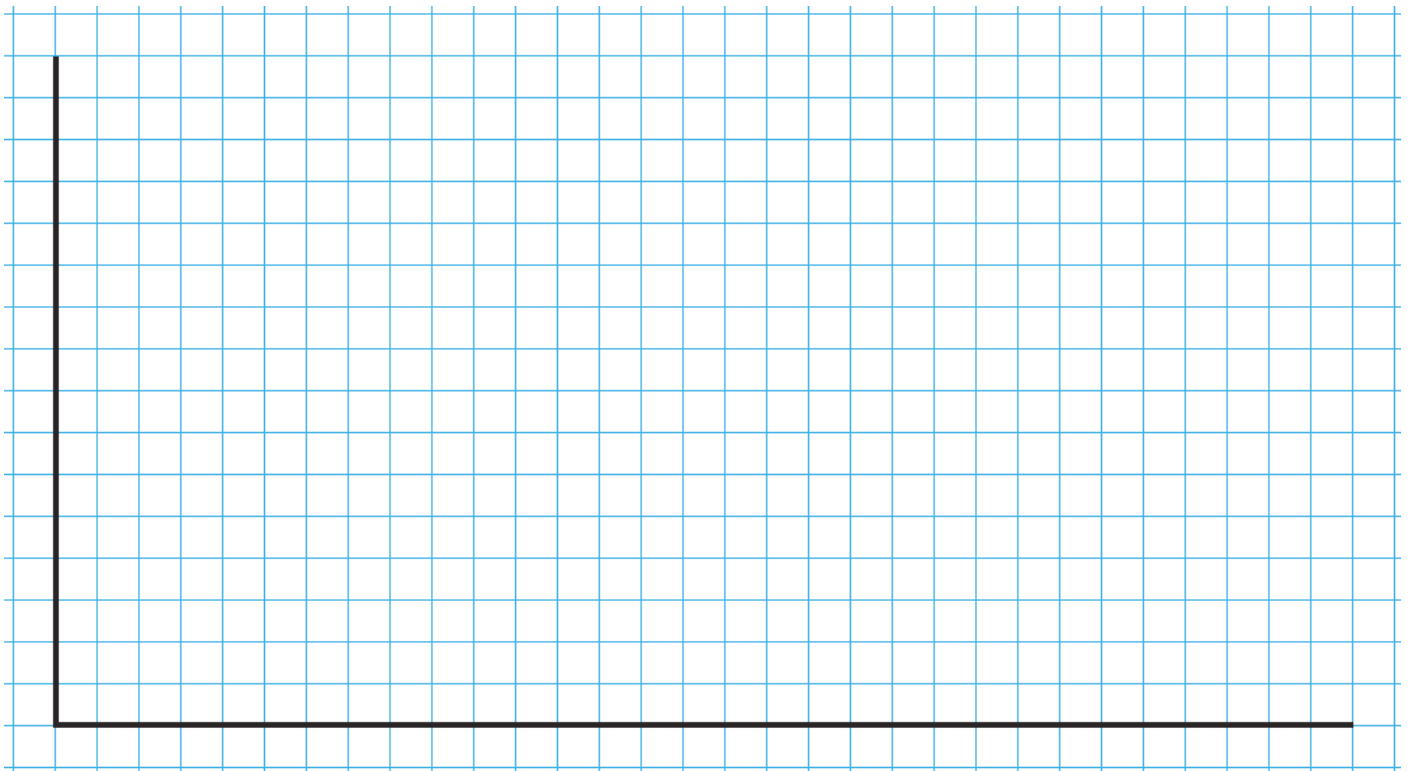
Graph 1

Graph 2



Challenge 2

Draw a time graph to show the following:



Challenge 3

Draw a time graph to show the following:



We are flying from London to Rome. The flight time is $2\frac{1}{2}$ hours. We will remain in Rome for just $\frac{3}{4}$ of an hour while passengers disembark the plane and new passengers board the plane for the return flight to London.

