



Challenge

MINI DRONE



WAS £40
NOW 25% OFF

I worked out the new price like this:
I know that 25% is the same as $\frac{1}{4}$ and $\frac{1}{4}$ of £40 is £10.
So that means that the new price is £10.



I did this to work out the new price:
First I found $\frac{1}{4}$ of £40, because $\frac{1}{4}$ is the same as 25%. $\frac{1}{4}$ of £40 is £10.
Then I subtracted £10 from £40, so the new price is £30.



Who worked out the correct new price?
Explain why.

Think about ...

Think carefully about the word 'OFF' and what it means in this context.

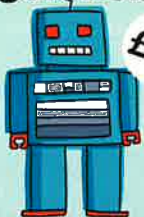


What operations do you need to carry out to find the new price?

What if?

Dave's Discounts

Roger Robot



£32

WAS £32
NOW 50% OFF

Robot World

Roger Robot

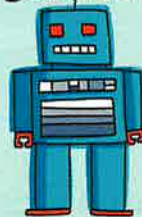


£24

WAS £24
NOW 25% OFF

EVERYTHING REMOTE

Roger Robot



ONLY £20

Which shop is selling Roger Robot for the lowest price?

Explain how you know.

What are the new prices?

When you've finished, turn to page 80.

