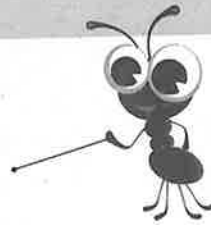


Name: \_\_\_\_\_ Date: \_\_\_\_\_

# On reflection

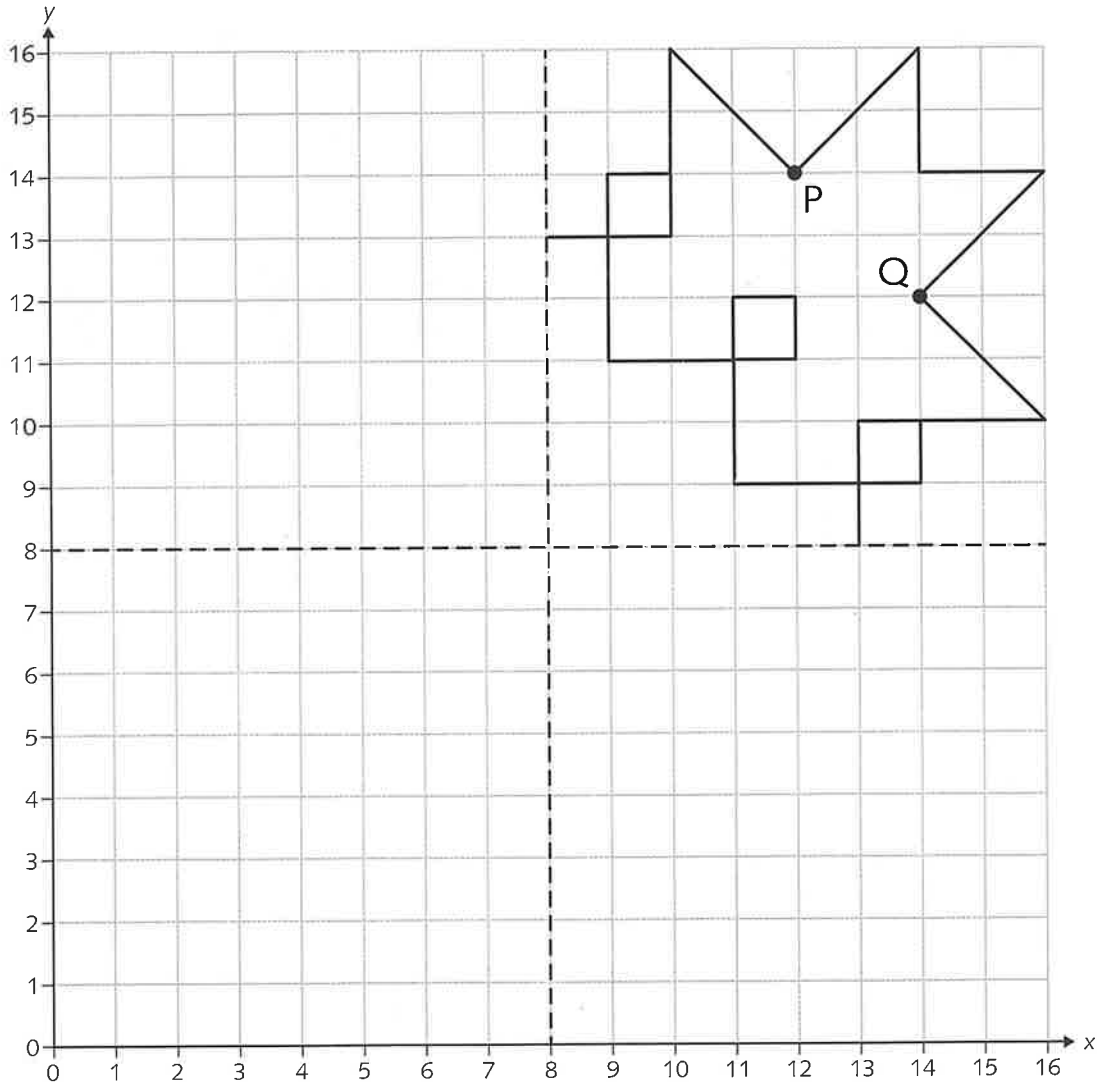
Reflect a shape in two lines of symmetry



You will need:

- ruler

- 1 Reflect the shape in the vertical line of symmetry.  
Then reflect the shape and its image in the horizontal line of symmetry.



- 2 Write the coordinates of the images of points P and Q.

First quadrant	Second quadrant	Third quadrant	Fourth quadrant
P (12, 14)	P' ( <input type="text"/> , <input type="text"/> )	P'' ( <input type="text"/> , <input type="text"/> )	P''' ( <input type="text"/> , <input type="text"/> )
Q (14, <input type="text"/> )	Q' ( <input type="text"/> , <input type="text"/> )	Q'' ( <input type="text"/> , <input type="text"/> )	Q''' ( <input type="text"/> , <input type="text"/> )