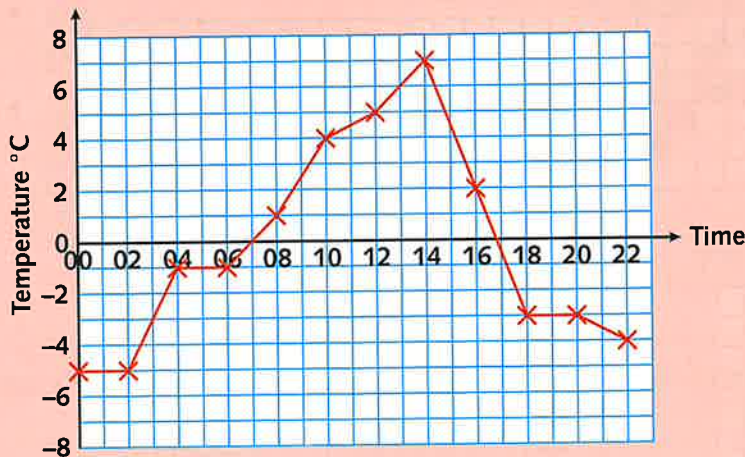




Challenge

Temperature for Thredbo Village on Friday 8th September.

Thredbo Village is a ski resort in New South Wales, Australia, where the ski season runs from June to September.



You will need:

- squared or graph paper
- ruler

What statements can you make about the temperatures in Thredbo Village on Friday 8th September?

Think about ...



Make statements describing and comparing hour-by-hour temperatures, and also the temperatures at different parts of the day: morning, afternoon, evening and night.



In your statements, include how the temperature rises and falls during the course of a day, and also by how many degrees.

What if?

Look at the table below showing the temperatures in Thredbo Village a month earlier on Tuesday 8th August.

Time	00	01	02	03	04	05	06	07	08	09	10	11	12	13	14	15	16	17	18	19	20	21	22	23
Temp (°C)	-6	-7	-7	-5	-3	-2	-1	-1	0	1	2	3	4	6	5	4	1	0	-2	-3	-3	-4	-5	-5

Draw a line graph similar to the one above for the temperatures in Thredbo Village on Tuesday 8th August.

What statements can you make comparing temperatures in Thredbo Village on these two days?

When you've finished, turn to page 80.

