

# Solving word problems (5)

Solve problems involving addition, subtraction, multiplication and division  
Use estimation to check answers to calculations

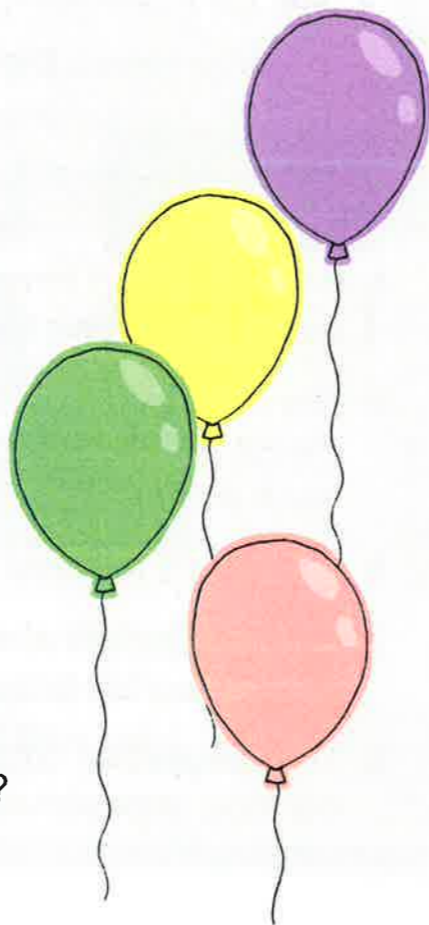


Work out the missing numbers.

- a  $2.6 \times \text{leaf} = 260$
- b  $3.02 \times \text{leaf} = 302$
- c  $9.7 \times \text{leaf} = 97$
- d  $4.5 \times \text{leaf} = 45$
- e  $1.18 \times \text{leaf} = 118$
- f  $0.77 \times \text{leaf} = 77$
- g  $22.2 \times \text{leaf} = 222$
- h  $0.59 \times \text{leaf} = 59$
- i  $7.09 \times 100 = \text{leaf}$
- j  $\text{leaf} \times 100 = 311$
- k  $0.03 \times 100 = \text{leaf}$
- l  $\text{leaf} \times 10 = 2.1$
- m  $3.19 \times \text{leaf} = 31.9$
- n  $\text{leaf} \times 100 = 46$
- o  $0.21 \times \text{leaf} = 21$

1 For each of these questions, first make an appropriate estimate of the answer and then work it out. Then compare your answer with your estimate. (Remember to round answers involving money to 2 decimal places.)

- a The children in Year 6 decorate the school hall with balloons and streamers. Balloons cost £2.64 per bag of 8 balloons. Streamers cost £3.87 per roll. They decorate the hall with 6 rolls of streamers and 96 balloons. What is the total cost?
- b Mrs Wu orders 65 pizzas for the Year 6 end-of-year party. The total cost is £620.10. How much does each pizza cost? If each pizza is divided into 8 slices, approximately how much does 1 slice cost?
- c Mr Scott buys 70 party hats. They cost 25p each. How much does he spend? Give your answer in pounds.
- d £500 is set aside to buy cupcakes. Cupcakes are sold in packs of 6. Each pack costs £5.59. Year 6 order 342 cakes altogether. How much money do they have left?



- e Balloons cost £2.60 for a bag of 8. How much does 1 balloon cost? How much do 4 balloons cost?
- f Mrs Sant buys 32 large bottles of juice. Each bottle costs £5.92. How much does she spend? If 6 cups of juice can be made from each bottle, approximately how much does it cost per cup?



- g Using the information from all of the relevant questions, calculate how much Year 6 and their teachers spent on the party.
- h The school contributes 25% of the total cost of the party. Local businesses donate 10% and the parents donate the rest. How much do the parents donate?
- i Individual cupcakes cost £1.28 each. Packs of 6 cupcakes cost £5.59. How much money would you save by buying the pack of 6 cupcakes rather than 6 individual cupcakes?



2 What operation is represented by each ★?

- a  $(372 \star 6) \star 9 = 558$
- b  $(372 \star 6) \star 9 = 248$
- c  $372 \star 6 \star 9 = 2241$
- d  $372 \star 6 \star 9 = 71$
- e  $372 \star (6 \star 9) = 24.8$
- f  $372 \star 6 \star 9 = 2223$

### Challenge 3

1 Make up five of your own word problems about an end-of-year party. Use the ideas below to help you as well as using some of your own ideas. Swap your word problems with a friend to solve.

Disco entry ticket: £3.50

Face painting: £4.85

Prize: £35 voucher

Drinks: £1.75

Pizza slice: £0.95

Fries: £2.40

2 Using each digit only once per question, make each of the following calculations correct.

- |   |   |   |   |   |   |      |       |   |   |      |   |      |
|---|---|---|---|---|---|------|-------|---|---|------|---|------|
| 1 | 4 | 7 | a | x | = | 3952 | b     | ÷ | = | 29.5 |   |      |
|   |   |   | c | + | = | 803  | d     | ÷ | = | 4.8  |   |      |
| 2 | 6 |   | e | · | x | =    | 724.2 | f | · | -    | = | 4.64 |

